

Mile High Wildlife Photography Club

April 2008 Volume 32, Issue 4

Wheeler Geologic Natural Area

by Frank Weston

If you're one of those folks who really like getting off the beaten track in your search for unique photos, Wheeler Geologic Natural Area is just the place for you.

Wheeler is the result of the volcanic eruptions that created the San Juan Mountains 30 million years ago. Ash clouds, similar to the Mount St. Helens eruption in 1980, spread across southwestern Colorado.

The San Juan Mountains of southwestern Colorado are the remains of a very large volcanic field that covered much of the southern Rocky Mountains 30-35 million years ago. Over a period of about five million years, a series of volcanic eruptions emanated from the San Juan volcanic field, resulting in the formation of at least 17 calderas that are from 6 to 40 miles across. Although the San Juan volcanic field is responsible for the largest pyroclastic eruption known on earth, most of the eruptions were of a more moderate size, although I still wouldn't want to be in

the neighborhood when it happened. The eruptions responsible for the ash beds at Wheeler Geologic Natural Area were of the more modest size. Several layers of tuff (volcanic ash) resulting from different eruptions can clearly be seen at Wheeler.

However, we wouldn't be able to see any of this if it weren't for erosion. The tuff beds

at Wheeler are relatively soft, making them highly susceptible to erosion. The result is bizarre badlands topography of strange shapes and colors. The soft ash formations are fragile and are thus vulnerable to human activity which is cause for some concern for this magnificent landscape.

Away from the erosion face, characteristic stands of Engelmann spruce and subalpine fir dominate. A few adventurous trees manage to find a foothold in the eroded

tuff, an otherwise barren landscape.

The weirdly eroded tuff juxtaposed with valiant fir trees that manage to find root in



this barren landscape can make for some beautiful landscape shots.



Wheeler is not a site that you might just casually stumble upon. Getting there takes a little planning and effort. Wheeler is located in a remote part of the Rio Grande National Forest northwest of South Fork. A 3-4 hour drive on a high-clearance, 4WD road is required to get into the site, if the road is open. This is a Forest Service road that is not kept open in the winter. Heavy snows in the San Juans can make this road impassable from September to June. With the snows that have fallen in the San Juans this year, it might not open until July. Always check with the Rio Grande Forest Service office in Monte Vista, 719-852-5941.

At the Last Meeting...

The club members selected The Decisive Moment as the theme for the club's TWE exhibit. Entry guidelines are presented below.

Of Interest...

The wildflower season is promising to be a good one. Here are a few websites to help you select your locations.

calphoto.com/wflower.htm
 desertusa.com/wildflo/wildupdates.html
 nps.gov/deva
 davidsenesac.com

Gordon and Cathy Illg, and **Russ Burden** will be presenting a NANPA Regional event on Mount Evans in June. Visit the following website for all the details:

http://www.resourcenter.net/Scripts/4Disapi3.dll/4DCGI/events/161.html?Action=Conference_Detail&ConfID_W=161?

Judgment Day Approaches

The Photography Judging Class is a step closer to happening. Seven people have responded so far. If you told Fred Stearns at the last meeting that you wanted to attend, please respond again to make sure that you haven't been missed. There is still room for a few more participants. If you have ever thought about judging but were unsure of how to go about it, now is your chance to learn. If you have already judged at our club or others, but would like to learn some new pointers, please join us. With the members who have judged in the past and the new crop that has responded, we will have a good group of judges of which we can be proud.

In order to help Russ Burden coordinate a time for the class, please respond by email to both Russ at rburden@ecentral.com and Fred Stearns at flstearns@q.com. A simple YES is all Russ will need at present. Once he has a complete list, he will put out two date options. Whichever one gets the most votes, that will be the date of the workshop.

MHWPC
The Wildlife Experience Exhibit
2008

The Decisive Moment

The Wildlife Experience (“TWE”) has invited the Club to exhibit our work this summer in the Habitat Hallway (adjacent to the theater lobby). The theme will be *The Decisive Moment*. At the regular Club meeting on April 9, we will have a special digital competition where Club members will choose 22 images to be included in the exhibit. No member will have more than one image selected for the exhibit. Only Club members that have paid their Club dues may participate. Please read all of the FAQ’s below for further guidance on the exhibit process.

FAQ’s

1. What is the “Decisive Moment”? The exhibit theme is intentionally broad to allow for a wide variety of nature subject matter and for creative interpretation by the Club’s members. This includes both wildlife and scenic images. The idea is to find nature photos that are not the normal every day scene, but more of a magical moment in time. Some ideas are:

- A colorful sunrise/sunset at an interesting location
- A scenic with dramatic weather such as snow, fog, or a storm
- Wildlife interacting with each other
- Wildlife in action

Any entry that meets the Club’s regular competition guidelines for the wildlife, scenic or wildlife - hand of man categories may be entered. So, it must be a nature photo, under the Club’s regular rules. After that, it’s up to the judges.

2. How much creative adjustment can I make to my image? All normal “Photoshop” adjustments that are allowed under our regular Club competition rules for the wildlife, scenic and wildlife - hand of man categories, may be applied to your images. Highly adjusted or created images that would fit into the Club’s Open competition category are NOT allowed for TWE exhibit.

3. Are captive wildlife subjects allowed? Yes, they are allowed. Any entry that meets the Club’s guidelines for the wildlife - hand of man category may be entered.

4. How do I enter? Each Club member may submit a maximum of 3 images. Entries should be submitted via email to milehighphotoclub@gmail.com during the digital image submission window for the April 2008 meeting. **Please title your email with “TWE” and send all of your images in one email.** Remember to title your image appropriately as FirstnameLastname-DescriptiveTitle.jpg (i.e. RitaSummers-RedFoxPortrait.jpg). You will have a chance to give your image a more artistic title later if you get into the show. Competition entries should follow standard Club competition JPG format of 72 dpi and 1024x768ppi if it is a horizontal shot, or 768 on the vertical side if it is a vertical shot. Files should be 350Kb or less for emailing. If you want to enter any images from an original slide (not a digital capture), you must submit a low resolution digital scan for the competition. Local photo shops like Wolf, Mike’s Camera, and Denver Digital can scan slides for a few dollars. **Please refer to the Digital Image Submission Guidelines published on the Club’s website www.MHWPC.org.**

5. How are images selected to the show? The Club members in attendance at the April meeting will vote to select 22 images for the exhibit, including two "Best of Show" images that will be prominently featured and displayed at a larger size in the show. Each Club member may enter a maximum of three digital images into the April TWE competition.

The first round of voting will be to select the single best image from each member, which will move into the final round. In the final round, the top 22 exhibit images will be selected. Finally, 2 of these images will be selected as Best of Show from the top 5 images in the final round. Each member gets 22 votes during the final round, so it really helps to have a piece of paper and a pen to take some notes on your favorite images as they are shown and to track your votes.

6. What must I bring to the April meeting?

- If you are entering digital image files, bring a CD with high-resolution TIFF files to the April meeting. Even though you already emailed low-resolution files, we need a high-resolution file for printing from all the winners. 20 of the images will be printed on 16x24 inch paper. The two best of show images will be printed on 20x30 inch paper. All high resolution image files should be at least 300ppi and 24 inches on the long side. You should optimize your high resolution image file to be ready to print. Denver Digital will not make any adjustments to your image before printing. It is okay to put all 3 of your digital high resolution images on one CD just make sure to clearly label the title of each image.
- If you are entering slides, bring the original slide to the April meeting, even though it has already been submitted as a low-resolution scan for the competition. If your image is selected, we need the slide from you, the night of the competition, to get a high-resolution scan made for printing. Please note that Denver Digital will not make any adjustments to the image if they do the scan. Or, if you already have a high-resolution scan of your slide, bring that high-resolution image on a CD and follow the digital image guidelines above.

- Paper and a pen to take notes and track your votes.

7. Can I enter a mix of digital and slides?

Absolutely. But since the competition is in a digital format, your competition entry submission (maximum of 3 images) must all be in the prescribed low-resolution digital format even if the original image was captured on film. Bring to the April meeting your original slides and/or high-resolution digital files on a CD for all of your image entries.

8. If my image is selected to the show, what happens next?

The night of the competition, we will need your high-resolution image on CD or original slide to get the print made. You'll get the CD or slide back at a future Club meeting. Also on the night of the competition, the winning photographers need to sign a permission form to get the prints made. Shortly after the April meeting you will need to email or snail-mail a 50-word maximum written description of your selected image to Chuck Winter. This will be displayed alongside the image so TWE visitors can learn something about it - what kind of animal it is, where did you take the picture, were there any interesting things going on, etc. This should be general information about the image subject and should NOT include any photographic information like, camera, lens, etc. Please ask Chuck Winter for suggestions, if you need help with this.

9. Who pays for the prints and frames?

TWE pays for printing, matting, and framing. Denver Digital makes the prints for the show. They donate much of the cost, so stop in and say thanks. If your image is in the show, you will get to keep the print (without matte/frame) after the show is over!

10. What if I want to enter the competition, but can't come to the April meeting?

You don't have to be present to win, but your image does. You need to send the applicable items listed in item 6, above to the meeting with someone else: the high-resolution files

on CD; and/or original slides; plus we need written, signed permission for Denver Digital to make one print for the exhibition. The Photographer's Copyright Consent Form can be found at the end of this newsletter or on the club website.

Field Trips

If you are interested in participating or are able to lead one of these trips, please contact Chuck Winter, 303-972-2538, cwinter@mii-rmcc.com.

Foxes

April 12 - afternoon

Evergreen (Date may have to vary depending on foxes)

Sandhill Cranes

April 12

Kearney, Nebraska

Wild Horses

May 3

We have scheduled another Wild Horse field trip. We have space for only 20 people since the trip is also open Parker Artists Guild. Contact Charlie Summers, 303-840-3344 (H), 303-887-5666 (C), Charlie at wildimages.biz

Spring in RMNP, Pawnee Buttes, Burrowing Owls

May 17

Mount Evans or Burrowing Owls, Rocky Mtn Arsenal

June 7

Wildflowers

Jul 18-20

American Basin, Lake City

Wildflowers – **Group Leader needed**

Jul 25-26

Yankee Boy Basin, Ouray

Maroon Bells

Sep 19-21

Rocky Mountain National Park

Sep 26-28

Bosque del Apache NWR

Nov 27-30

Rocky Mountain National Park

Dec 20

Big Horn Sheep Rut

Photo Ops

Greater Prairie Chicken Tour

Wray, CO

Weekends march 29-april 20

Contact wraychamber.net

Upcoming Programs

April: Natures Best selection and TWE Competition

May: TBA

June: Charlie Summers on Antarctica

Braggin' Rights

Eric Moore had two of his photographs selected for the Lone Tree Photography Show.

Gordon and Cathy Illg have two photos, one full page, in the latest issue of *National Wildlife*, both taken in Colorado on our Rocky Mountain High tour. They will have a two page spread of their kissing nanny & kid mountain goats in *Your Big Backyard* kids magazine, also taken in Colorado.

Hospitality for April Meeting

A big thank you from all of us!

Snacks: Georgia Hart

Drinks: Judy Deist

Competition...

Judge: Chris Loffredo

Prints **Scenic** – 9 entries

1st Place

Dawn—Grand Canyon
Reb Babcock

2nd	Mesa Arch	Russ Burden
3rd	Canyon Color	Mary Paetow
HM	Stormy Sunset	Sean Peterson
	Cottonwood Pass	

Prints **Wildlife** – 5 entries

1st Place

Wood Stork Family
Dick York

2nd Wood Duck and Drop Russ Burden

Prints **Wildlife HoM** – 1 entries

1st Place

Nick Burden
Bald and Beautiful

Prints **Open** -- 3 entries

1st Place

Boulder Mountain Sunset
Russ Burden

Slides **Scenic** – 5 entries

1st Place

Mavasus Creek
Mary Paetow

2nd Stone Glow Tammy Hammond

Slides **Wildlife HoM** – 3 entries

1st Place

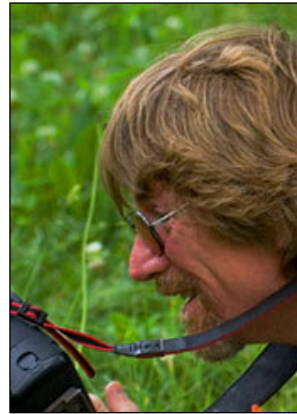
Dick York
Mother and Pup

Slides **Open** -- 1 entries

1st Place

Flower Dream
Dick York

Getting to Know You...



Gordon Illg

1. What drew you to nature/wildlife photography? When?

I got into photography because of the backpacking I did when I was in high school. Of course, I've always been interested in wildlife and got a degree in wildlife biology. I'd been taking pictures for long time, getting a lot of experience, and joining photo clubs in the area like the Urban Wildlife Photography Club back in 1987 or '88. The Urban Wildlife club was started by a pair of local professionals who were producing a book on urban wildlife and invited photographers to join them in the project. A lot of people's first published photographs came out in that book. It was called *Close to Home* and was published by what is now the Denver Museum of Nature and Science.

2. What piece of camera gear is next on your wish list?

Hah! We just spent \$8500 in upgrades, so my wish is that the credit card bill goes away.

3. What's your favorite photo shoot story?

Too many of those to tell here.

4. How did you create your most memorable photograph?

My favorite thing on trips almost all involve animals treating us as a members of the herd or pack, like when baby elephant seals crawl right up to us. In the Galapagos, for instance, the birds landed on my fingers and just stayed there – they intended to be there, they weren't there by accident. Or like the time I was down on my knees shooting a bear cub and he came up and pops me on the head; he was just playing so I popped him back. His mother was a distance away, sleeping.

5. What's the first thing you tell newcomers or interested folks about Camera Club?

To me, Mile High is a collection of some of the best nature photographers in the state, and it's a great learning experience for anybody who really wants to become a good or even better nature photographer.

6. What do you do when you're not behind the camera (i.e., occupation or other avocations)?

We're usually in front of the computer, trying to sell trips or sell photos, doing what it takes to market our work.



Cathy Illg

1. What drew you to nature/wildlife photography? When?

I always took snapshots when I was a kid, I didn't really do too much until I met Gordon and he was into photography when we went hiking or backpacking. I took a few pictures then and I found I liked it.

2. What piece of camera gear is next on your wish list?

We aren't looking for gear at this point. But good polar bears locations are next on our wish list for sites.

3. What's your favorite photo shoot story?

That'd be from the Texas shoot last year when I was trying to get an image of a mouse. One of the critters allowed us to capture it and put him in a terrarium. It was built a little too big but he felt he had nowhere to hide. I was trying to shoot into box, using my 400 lens and he comes running and leaping straight at me. All I saw were little white feet jumping at me so I grabbed the equipment and ran! Gordon says it was ultimately quite a nature photograph. Of course, ultimately I got the shot by having Gordon hold the mouse's tail.

4. How did you create your most memorable photograph?

In recent memory that would be the shot of howling coyotes that took an honorable mention in the BBC Photographer of Year competition last year. It happened while we were driving around at about sunset in Death Valley. There was a family of

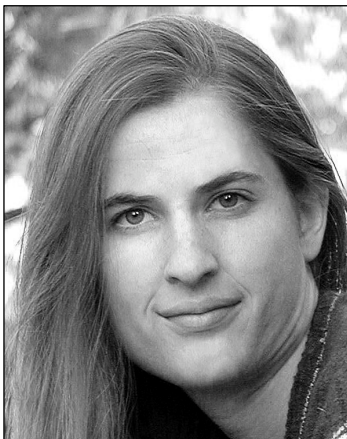
coyotes, maybe eight of them, running back and forth in front of us on the road kicking up all this dust. Just about as the sun was setting the trees began to look gold, and for some reason all the coyotes stopped running and started howling together. It was a great shot. We've often heard them howling, you know, but it was great to see them all in chorus.

5. What's the first thing you tell newcomers or interested folks about Camera Club?

We tell them a lot! We tell people our camera club is way up there; that it can compete with anybody. If you are interested, and want to learn how other people who are taking good shots, about the equipment, the software, and meet other people who are at a very high level of accomplishment, come to Mile High.

6. What do you do when you're not behind the camera (i.e., occupation or other avocations)?

Both of us like to read when we get away from the computer. Gordon likes science fiction and I like mysteries. And we try to go to movies when we are home.



Cathy Sheeter

1. What drew you to nature/wildlife photography? When?

I've always been an animal person. As a kid in Oregon I showed thirteen different species

of animals in 4H competitions. Also, my father's a wildlife biologist and I have a

degree in animal science. I do artwork now, and for my studies of animals I needed references. A little research on copyrights and I figured I needed to do my own reference photographs. Once I went digital in 2002 I thought "Hey this pretty fun!"

2. What piece of camera gear is next on your wish list?

I've been shooting with a Canon 20D, but I **just** bought a Canon Mark II. Of course, there are always lenses I need but the next realistic hope is for a 100-400 – the 600 is a lo-o-ng ways away.

3. What's your favorite photo shoot story?

This happened semi-recently. I was shooting bison in Yellowstone, right up in with the herd. They were surrounding the truck we were in. I got out and got up behind a few of them. A bull bison about twenty feet away starts kicking up dust and looking over his shoulder at me. I make a hasty exit and then the bull promptly lies down and rolls in the dust. My boyfriend, who is not a photographer, laughs while I'm busy making my exit. *I thought* I was just trying to be respectful of the bison's space.

4. How did you create your most memorable photograph?

The zebra whiskers shot I showed in the February competition was a zoo shot, but I like the uniqueness of it, how the lighting and the composition came together. It was early morning, about nine. I never realized zebras were so bushy and there was this great backlighting and then another zebra came into background and it all just worked out!

5. What's the first thing that interested you about Camera Club?

I was invited by Charlie Summers who saw my photography on-line (at www.aphelionart.com). He said, "I think your photography would be a welcome addition to the club." I'd been a member of a Longmont photo club but their meeting schedule conflicted with mine. I'm always interested in learning especially from those who are better than me. Initially I was worried the pros in the club might want to only compete with themselves but this club really wants to share. It's great to see the pros encourage the newcomers.

6. What do you do when you're not behind the camera (i.e., occupation or other avocations)?

Professionally, I'm a dog groomer in Longmont, but I'm slowly making my artwork a bigger part of my income.

From the Webmaster

The MHWPC Website: www.mhwpc.org

Would you like to receive email notices when competition image submission windows open? Would you like to receive email notices about upcoming meetings? Do you have a photography-related website and want a link to it in order to drive traffic to it? Have you moved or changed email accounts lately? Would you like to post a picture of yourself to be included in the online Membership Directory?

If you answered yes to any of the above, login to your MHWPC website account and go to your Manage Account page. The "Login" button is tucked away in the extreme upper right corner of each page, and after you login, a "Manage Account" link will appear at the very top of the page.

On the Manage Account page, you can update your contact information, control the amount of

contact information that is shown to other club members, add a picture of yourself, edit your email preferences (to receive notices or not), and add a link to your photo-related website.

If you and your family member(s) have different contact information, like individual phone numbers or email addresses, you can add this information by adding an additional family member in the "Other Family Members" section of your Manage Account page. All members of the family share the same account (membership status) and physical address, and each member can have his or her own name, phone number, and email address.

In order to prevent spam filters from intercepting emails from the system, add "system@mhwpc.org" to your list of approved email addresses. Emails that are sent through email lists retain the "from" and "reply-to" information of the original sender.

If you have any questions, or suggestions for how to improve the website, contact the webmaster (webmaster@mhwpc.org).

Library News from the Lamb's



Be sure to stop by the Library Table at the next meeting. We have lots of things for you to read by the spring flowers. Photos are everywhere so keep shooting. We will continue to have a checkout drawing so come to the table and, as the books and CD's would say, "Check us out!"

Joe and Betsy Lamb
inblamb@comcast.net or 303-841-2565

Workshops and Seminars

Russ Burden's Photography Tours
 Visit russburdenphotography.com. Contact Russ at 303 791-9997, rburden@ecentral.com

Destinations include:

- Apr 19 - 25, 2008 - Monument Valley / Slot Canyons
- May 10 - 16, 2008 - Arches & Canyonlands National Parks
- May 24 - June 2, 2008 - Oregon Coast - 10 day trip
- June 6 - 12, 2008 - Tetons and Yellowstone Natl. Parks in Spring
- Sept. 24-Oct. 3, 2008 - Tetons and Yellowstone Natl. Parks in Fall - 10 days
- Oct. 21 - 26, 2008 - Hunts Mesa - Aerial perspective of Monument Valley and Capital Reef NP for red rocks and fall color.
- Nov. 2 - 8, 2008 - Bryce Canyon and Zion National Parks
- Dec. 10 - 16, 2008 - Bosque Del Apache / White Sands Natl. Mon.

Cathy & Gordon Illg – Workshops:
 Adventure Photography 303 237-7086
gordon@advenphoto.com
www.advenphoto.com

- South Texas Birds, May 5-10
- Wild Horses, May 27-31
- Wildlife Babies, June 16-19
- Alaska Coastal Grizzlies, June 26 – July 3
- Rocky Mtn Wildflowers, July 20-25
- South Dakota Badlands, September 14-19
- Costa Rica, November 10-19

We are offering our NANPA discount to all club members also--\$50.00 discount on less than 5 day tours and \$75.00 discount on all other domestic tours.

James Hager Photography - Small Group Photo Safaris
www.JamesHagerPhoto.com
James@JamesHagerPhoto.com

- Bats in Aug 2008: shoot bats in flight in a controlled setting, Arizona, Aug 30- Sept 3
- Kenya in Oct 2008: Classic safari to Samburu and Masai Mara National Reserves, 16 days, Oct 16-31
- Winter Wildlife in Jan 2009: wildlife models in winter (wolf, Siberian tiger, snow leopard, mountain lion, lynx ...), Montana, Jan 25-29

Mile High Wildlife Photography Club

President: Chris Loffredo
ChrisLoff@comcast.net 303-267-3846
Vice-President: Matt Schaefer
mattscha@aol.com 303-972-9882
Secretary/Treasurer: Patrick Devereaux
patrick.devereaux@cushwake.com 303-683-7011
Newsletter Editor: Frank Weston
frank@frankweston.com 303-829-7494

TEAM LEADERS

Monthly Programs: *Chuck Winter*
cwinter@mii-rmcc.com 303-972-2538
Membership: *Rita Summers*
ritasummers@gmail.com 303-840-3355
Special Programs/Field Trips:
Chuck Winter
cwinter@mii-rmcc.com 303-972-2538
Competition: *Russ Burden*
Competition Scoring: *Chris Loffredo*
Competition Entries/Judging Coordinator:
Fred Stearns 303 400-0385
Snacks/Greeters: *Nancy Stocker 303-759-4056*
Publicity: *Buzz Soard 303-779-9933*
Library: *Betsy Lamb 303-841-2565*
Webmaster: *James Hager*
<http://www.mhwpc.org> johager@earthlink.net

BOARD of DIRECTORS

Rita Summers * Russ Burden
 Chuck Winter * Fi Rust * Frank Weston

April Meeting

Wednesday April 9
 7:00 pm – 10:00 pm
 at

THE WILDLIFE EXPERIENCE
 10035 South Peoria

Competition: Digital—TWE Competition

March Attendance: 50

_____, 20____
Customer Name _____
Store/Branch _____

PHOTOGRAPHER'S COPYRIGHT CONSENT FORM

I own the copyright in the accompanying film, print, slide, movie, artwork, CD-ROM, disk or other material (all referred to in this document as the "photos") depicting:

(Describe the content of the photos.)

I authorize _____ (dealer/lab) to reproduce the photos, provide digital or other services and products, and to deliver them to _____ (customer). Any restrictions on the customer's use of the photos are written on the front or reverse side of this form.

Check the appropriate boxes.

This release is for:

- Blanket use for this customer
- One time use
- The photos described above
- All photos by me

Notify me when the photos are copied: Yes No

Photographer _____

Address/Telephone _____

CUSTOMER'S SUPPLEMENTAL AGREEMENT

Customer represents that the above form has been properly signed by the copyright owner. Customer also agrees to pay the Dealer/Lab charges for all services provided, and to indemnify and hold harmless the Dealer/Lab and its agents for all liability, damages and expenses (including reasonable actual attorney fees) it may incur as a result of its providing processing or other services and/or printing the photos, including any claims brought by any other person claiming an interest in the photos or in their subject matter.

Customer _____

Address _____

Accepted By _____
Dealer/Lab

DEALER/LAB IS TO KEEP THIS FORM AFTER PROCESSING

Form 1
© Copyright, October 2007, PMA, 3000 Picture Place, Jackson, Michigan 49201 USA. Pads of this form are available at a small cost from the PMA Business Resources office at 800-762-9287.