

# Mile High Wildlife Photography Club

August 2006 Volume 30, Issue 8

## Wildflower Close-ups

by Frank Weston

July and August are prime times to photograph wildflowers in the high country. Close-ups of wildflowers are always a favorite with viewers. Here are a few ideas to help you get those dramatic close-ups.

The subtle texture of flower petals and their delicate pastel colors look best in soft light. Low contrast, diffuse light brings out a flower's elegant colors and beauty. Bright, hazy days are the best, but the weather doesn't always cooperate. Colorado's high country is often blessed with a cloudless blue sky and bright sun. Shooting in open shade is one way to overcome the harsh shadows created by bright sun. But open shade can give flowers a blue cast. If the flower is blue or purple, this may not be a problem. The blue cast may not look so good on a white or yellow flower so that's when a diffuser comes in handy. A diffuser does what its name implies; it is a white cloth that allows light to pass through it softly diffused. White rip stop nylon, available at fabric stores makes a good diffuser. Commercially made diffusers are also available at photo supply stores. If you're serious about flowers, a diffuser is a must. It allows you to shoot



even when natural light is less than ideal, even in mid-day sun. The very shape of some flowers makes photographing them difficult, regardless of the quality of the natural light. Often, the center of the flower is the most interesting part, yet the shape of the flower makes the center dark and hard to photograph. A good reflector solves this problem very nicely. I use a reflector that is white on one side and gold on the other. The white provides a natural, neutral light to the shadows, while the gold reflector can mimic the warm light of sunrise or sunset. Fill flash can also be used to open up the shadows. Again, a diffuser over the flash will keep the light soft and natural. Good flashes allow a great deal of control in the amount of fill flash they provide, from just a hint of fill to total elimination of shadows. With flowers, subtle light



most interesting part, yet the shape of the flower makes the center dark and hard to photograph. A good reflector solves this problem very nicely. I use a reflector that is white on one side and gold on the other. The white provides a natural, neutral light to the shadows, while the gold reflector can mimic the warm light of sunrise or sunset. Fill flash can also be used to open up the shadows. Again, a diffuser over the flash will keep the light soft and natural. Good flashes allow a great deal of control in the amount of fill flash they provide, from just a hint of fill to total elimination of shadows. With flowers, subtle light

Fill flash can also be used to open up the shadows. Again, a diffuser over the flash will keep the light soft and natural. Good flashes allow a great deal of control in the amount of fill flash they provide, from just a hint of fill to total elimination of shadows. With flowers, subtle light



usually gives the best results.

Depth of field control is crucial to good wildflower images. Whether you use a macro lens, extension tube or close-up filter, your available depth of field is very small. Pay very close attention to what is in focus and what is not. A subtle change in focus can make the difference between a throw-away and great photo.

The background is also critical. Selective focus is essential to controlling background clutter. Even though it may be out of focus, too much background detail can be very distracting. Pay careful attention to the background, for distracting detail as well as for distracting light/dark areas and patterns.

---

## At The Last Meeting...

Unfortunately, MHW's entry in Nature's Best competition did not finish in the top three. Looks like we'll need to try even harder next year.

Patrick Devereaux has volunteered to take over the Treasurer duties for the club. Thank you, Patrick.

---

## This Is YOUR Club

The Mile High Wildlife Photo Club is based on complete participation by its members the make it survive, all should try to support some part of the operations involved to keep it going, each of us have some talent or capability we can offer to the club no matter how small it might be. There are a number of things required to set up the equipment for the programs and putting them back into storage, getting the name tags out and having them ready for the members when they arrive, being at the front door to greet visitors that come to the meetings and answer questions if they have any, bring snacks & drinks to the meetings for everyone to enjoy at the break, etc.

We are not asking for major contributions on everyone's part - but please contribute something where you can - this helps all the members to get to know others in the club and maybe find common interests among the

members, too! One area that always has trouble getting members to support are the snacks and beverages - as you can see, this is not an expensive thing, but almost everyone enjoys what is provided - there is no set thing that has to be provided, maybe you have something you make or bake that can be provided - we just ask that members help with this part, too. You can contact [Roger Kinney](#), 303-369-6120, about providing a snack or beverage for future meetings and being a greeter. There are still openings for the balance of the year.

If anyone has ideas for club field trips, bring them up, there is no such thing as a dumb trip, we can always find something to shoot no matter where we go. You may be surprised how many other members have the same thing in mind, but haven't spoken up either. You can contact [Chuck Winter](#), 303- 972-2538, with those ideas or bring them up at a meeting. The competitions are great, but they are only a part of what we are about, we want to help members learn as we go too. If you have ideas for programs or presenters, you can mention them to Chuck Winter as well.

Another area we are starting to break into is the digital world, which is an integral part of photography now, this doesn't mean we are going away from the traditional film world, we are just trying to bring the best of both worlds to our members. All of this will also need your input as we work through it, and make it something of value to the members.

Get involved and make this a better club...our club is only as good as the sum of its members! Friends like to be among friends...lets keep our club a friendly atmosphere for all to enjoy!

Roger L. Kinney, Refreshment Coordinator  
Ron Eberhart, President

---

## Club Exhibit at TWE

### The Competition

Once again, The Wildlife Experience has given us the opportunity to display our images in their gallery. The theme of the competition, Rocky Mountain High, was approved by vote at the June meeting. A competition to select the

images for display will be held at the August meeting. New competition rules approved at the June meeting will apply.

Each member is entitled to submit three images into the TWE competition. Images entered into the competition may be slides or digital. Digital images should be e-mailed to the club at [milehighphotoclub@gmail.com](mailto:milehighphotoclub@gmail.com). They should be standard sized files following our normal digital competition requirements, maximum file size of 350K at 72 or 96ppi. Slide entries must be brought to the July Club meeting and given to Charlie Summers. All slides should be clearly marked with your name.

### The Exhibit

All images that are selected for the exhibit will be printed by Denver Digital Imaging Center (formerly Slideprinter). If the image is a slide, Denver Digital Imaging Center will scan the transparency before making the print. The images selected for the exhibit will be printed at 16x24, and will be displayed matted and framed. After the show is over, the prints and any scans made of transparencies will be given to the photographers.

Digital images must be 300ppi at 24 inches on the long side. One very important thing people must consider before entering the competition is if the image they are entering is from a cropped file, will it still look good at 16x24? If the projected image is cropped a lot, making it into a 16x24 is not practical as the quality will be horrible. The above file size comes out to about 100 Mb making it impractical for emailing.

Winning slides and hi-resolution digital images (300 dpi, 24" on long side) must be submitted to Kathy Lingo at the August meeting, following the competition. If you submit any digital entries, you must bring a CD with hi-resolution files of the all the images that you are entering into the TWE competition to the August meeting.

If your image is selected for the show, you need to provide in writing, the image title, your name, and a 50-word maximum written description of the image to [mailto:kathy@arch2000.net](mailto:mailto:kathy@arch2000.net) no later than Friday August 18. The written description should

include the location shown, any animal behavior depicted, or other interesting facts, for a general audience. Technical photographic information is specifically NOT requested.

---

## Of Interest

There will be a [one-day training seminar](#) in Denver, October 19, 2006, to help you develop a better understanding of color management.

---

## Upcoming Programs

### August—TWE Exhibit Competition

The competition will be to select images for TWE exhibition.

### September—Club Picnic

The club picnic will begin at 6 pm. The club will supply drinks, plates, napkins, silverware, pop, ice and fried chicken. Members are asked to bring a dish to share.

---

## Braggin' Rights

**Russ Burden's** winning shot in Nature's Best, Backyard Habitat Category was chosen to be included on the limited edition poster for the Nature's Best Photography Collection. It's the first commemorative poster featuring winning images from past Nature's Best International Photography Awards.

**Rita and Charlie Summers** have just finished a book entitled ALL THE WILD HORSES, to be published September 1 by Voyager Press. It will be in book stores by September 15th. The book is about wild horses the world over. Included are the Exmore ponies of England, the white horses of the Camargue in France, wild horses in Namibia, the Somalia wild ass—from which all donkeys are descended (yes they are in the horse family)—and of course the mustangs of North America.

---

## July Competition Results

Judge: Rick Harner

Category: Digital

### Open – 5 entries



**1<sup>st</sup> Place**  
*Double Crested Cormorant*  
Tom Lentz

**2<sup>nd</sup>** Lake Agnes Frank Weston

### Wildlife - 13 entries



**1<sup>st</sup> Place**  
*Cheetah Running in Dust*  
Charlie Summers

**2<sup>nd</sup>** Mountain Goat Jr Leap Chris Lofreddo  
**3<sup>rd</sup>** Snowy Egret Chasing Fish Nick Burden  
**HM** Brotherly Love Jan France  
**HM** Leap of Faith Chas. Summers  
**HM** Sandhill Pair in Flight Russ Burden

### HoM Wildlife - 4 entries



**1<sup>st</sup> Place**  
*Coot Chick*  
Ron Eberhart

**2<sup>nd</sup>** Gray Wolf Reflection James Hager

### Scenic – 17 entries



**1<sup>st</sup> Place**  
*Athabasca Falls*  
James Hager

**2<sup>nd</sup>** Diamond Blue Frank Weston  
**3<sup>rd</sup>** Dallas Divide Fred Krampetz  
**HM** Canyonlands Undercast Russ Burden  
**HM** Monoco Glacier Chris Loffredo

---

## Club Field Trips

Listed below are tentative dates for club field trips. Exact dates will be determined as the seasons progress. Contact [Chuck Winter](mailto:Chuck Winter) (303-972-2538) for more information.

Fall colors

- Rocky Mountain National Park—Sept 15 – 16
- Maroon Bells—Sept 22 – 24

---

## Hospitality

**Greeter(s):**

**Snacks:** George & Sets Takeno

**Drinks/Ice:**

---

## Club Library

The club library contains books, videos, magazines and CDs about nature photography. Club members may check out one item for one month. Overdue fines of \$1.00 per month will be due on any item not returned the next month. Please be considerate of others who want to use the library resources! Do not check out an item unless you will return it at the next month's meeting. If you miss the next meeting, please contact **Kathy Lingo** to make arrangements to return the item to her. [kathy@arch2000.net](mailto:kathy@arch2000.net) or (303) 733- 9844

---

## Workshops and Seminars

Cathy & Gordon Illg – Workshops:  
Adventure Photography 303 237-7086  
[gordon@advenphoto.com](mailto:gordon@advenphoto.com)  
[www.advenphoto.com](http://www.advenphoto.com)

- Colorado Color, September 24-29
- Fall Wildlife & Photoshop, October 4-7
- Texas Birds, October 10-15
- Bryce & Zion, November 5-10
- Arches & Canyonlands, November 12-17
- Bosque del Apache (Full Moon), December 3-8

---

Russ Burden's Photography Tours  
Visit [russburdenphotography.com](http://russburdenphotography.com). Contact  
Russ at 303 791-9997 or  
[rburden@ecentral.com](mailto:rburden@ecentral.com)

Destinations include:

- Sept. 22-Oct. 1 2006 Tetons and Yellowstone Natl. Parks in Fall -10 days
- Oct. 7 - 13 2006 Vermont in Autumn
- Oct. 21 - 26 2006 Hunts Mesa - in Monument Valley and two days in Capital Reef.
- Nov. 4 - 10 2006 Bryce Canyon and Zion National Parks
- Dec. 3 -10 2006 Bosque Del Apache / White Sands Natl. Mon. with full moon

---

## BORN FREE SAFARIS- Africa Trips 2006

Don Mammoser is leading two photo safari trips to Africa for Born Free Safaris next year. More information at [www.bornfreesafaris.com](http://www.bornfreesafaris.com)

- Kenya, October 2, 2006. This 14 day trip is \$6400, including airfare from Denver.

---

James Hager Photography - Small Group Photo Safaris, [www.JamesHagerPhoto.com](http://www.JamesHagerPhoto.com)  
[James@JamesHagerPhoto.com](mailto:James@JamesHagerPhoto.com)

- Kenya in Oct 2006: Classic safari to Samburu and Masai Mara National Reserves - 15 days, Oct 7-21
- Tanzania in Feb 2007: Wildebeest birthing season in Ngorongoro Crater and Serengeti NP- 15 days, Feb 3-17
- Primates in Feb 2007: Chimpanzees and gorillas in Tanzania and Rwanda - 11 days, Feb 17-27

---

## Mile High Wildlife Photography Club

President: [Ron Eberhart](#)  
720-635-6337  
Vice-President: [Chris Loffredo](#)  
720-200-0792  
Secretary/Treasurer: [Patrick Devereaux](#)  
303-683-7011

### **TEAM LEADERS**

Monthly Programs: [Chuck Winter](#) 303-972-2538  
Membership: *vacant*  
Special Programs/Field Trips:  
[Chuck Winter](#) 303-972-2538  
Competition: [Russ Burden](#)  
Competition Scoring: [Chris Loffredo](#)  
Competition Entrees: [Matt Schaeffer](#)/[Fred Stearns](#)  
Judging Coordinator: [David Terbush](#) 303-814-6969  
Snacks/Greeters: [Roger Kinney](#) 303-369-6120  
Publicity: [Buzz Soard](#) 303-779-9933  
Library: [Lingo Family](#) 303-733-9844  
Newsletter: [Frank Weston](#) 720-981-8087  
Club Website: [Devendra Kumar](#)  
<http://groups.yahoo.com/group/milehighwildlifephotographyclub/>

### **BOARD of DIRECTORS**

Russ Burden \* Tom Lentz \*  
Wayne Smith \* Rita Summers \* Rick Harner

---

## August Meeting

Wednesday August 9  
7:00pm – 10:00pm  
at  
THE WILDLIFE EXPERIENCE  
10035 South Peoria

Competition: TWE Exhibit  
Submittal Deadline: Saturday, August 5

July Attendance: 50

---

---

## July 2006 Guidelines for Competition Entry

Competitions are open to all club members. Competitions will be divided into two parts, Digital and Slides/Prints. During meetings when slide competitions are held, prints will also be eligible for competition.

During Digital and/or Print competitions, for all but the Open category, the following post processing restrictions apply:

Digital images may be enhanced or changed using any of the tools available in a post processing graphics editing program except one cannot copy or significantly alter the primary subject or primary parts of the photograph in any way, nor can one import items from another image. The intent of the original image must be maintained.

Up to four images may be entered by each member, with no more than two in any one category.

Prints must be mounted and matted, unframed, 8" x 10" or larger.

Entries that do not receive an award (1st, 2nd, 3rd or HM) may be re-entered in future club competitions.

### **WILDLIFE**

This category includes all forms of living wildlife whose normal, everyday movements are not controlled by man, excluding domesticated and captive animals. No evidence of man is permitted in the photo. Images as seen in the wild (e.g. backlit subjects, smooth water) are permitted. For an entry to be eligible in this category, the intent of the original image must be maintained. Digital images may be enhanced or changed using any of the tools available in a post processing graphics editing program as long as it doesn't ***significantly alter*** the primary subject or change the intent of the image. One cannot import items from another image or make duplicates of the primary subject. The intent of the original image must be maintained.

### **WILDLIFE—HAND OF MAN**

This category includes wildlife under controlled conditions, including zoos, game farm animals, domesticated wild animals in a natural setting, etc. Digital images may be enhanced or changed using any of the tools available in a post processing

graphics editing program except one cannot copy or significantly alter the primary subject or primary parts of the photograph in any way, nor can one import items from another image. The intent of the original image must be maintained.

### **SCENIC**

Nature photos of geological, botanical and meteorological subjects. See the aforementioned post processing guidelines above. For an entry to be eligible in this category, the intent of the original image must be maintained. Man made objects or wildlife, whether they are incidental or are intended to enhance and be an integral part of the image, are acceptable as long as they are a minor compositional element and not a main focal point of the image, nor should they be of a distracting nature from the natural elements of the picture. Man-made objects, such as barns, lighthouses, roads, vehicles, piers, etc. should not distract from the natural elements that appear in the image. Acceptance of photographs containing man-made objects will be at the judge's discretion.

### **OPEN**

This category has no restrictions other than that the subject of the image must be nature. Any image that does not fit into the other categories can be entered in the Open category. Any image that does not fit into the Wildlife, Wildlife Hand of Man, or Scenic categories is eligible for the Open category. There are no restrictions on this category other than the main subject of the photo must be nature.

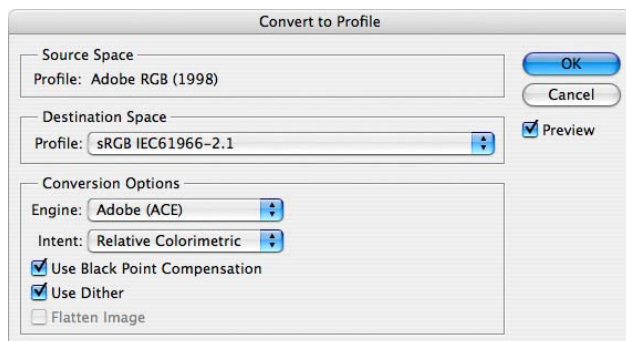
### **CRITIQUE**

There are no restrictions on this category except that the subject must be nature. This category allows members to anonymously enter experimental or trial images and receive the benefit of having their work critiqued by the judge. Images entered in the Critique category will be evaluated by the judge, but no score will be given. Each image will simply be critiqued so that the creators can learn from their own efforts, not just the efforts of others. Limited dialogue between the judge and entrant may be permitted if time allows. This category does not differentiate the types of images (wildlife, scenic, hand of man, creative, etc.). All images in this category are treated equally. All images entered into this category are eligible for entry into other categories at subsequent club competitions.

## Guidelines for Digital Image Submissions

1. Digital images must be submitted electronically by e-mail to [milehighphotoclub@gmail.com](mailto:milehighphotoclub@gmail.com). Contact Charlie Summers at 303-840-3344 if you are having difficulty meeting the deadline. Photo submissions will not be accepted at the meeting.

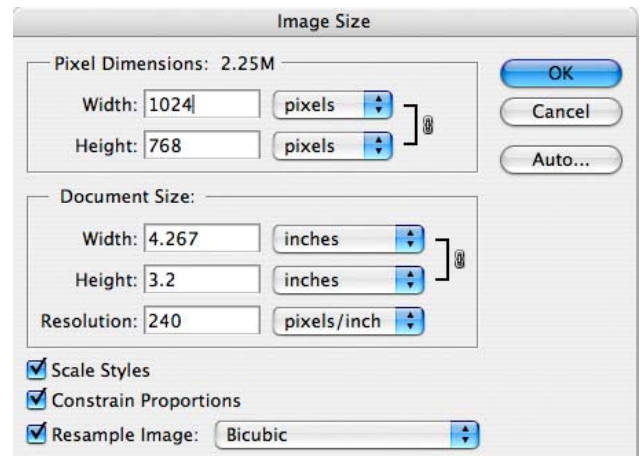
2. Digital images must be jpg files in sRGB IEC61966-2.1 color profile and sized in your graphics editing program prior to submission. The sRGB profile can be set in the camera. In Photoshop CS2, you can make sure your image is in the sRGB color space by going to Edit>Convert to Profile. Make sure the Destination Space is set to the Profile sRGB IEC61966-2.1. Then click OK. (In some older versions of Photoshop, you do the conversion by going to Image>Mode>Convert to Profile.) Make sure the Destination Space is set to the Profile sRGB IEC61966-2.1, then click OK.



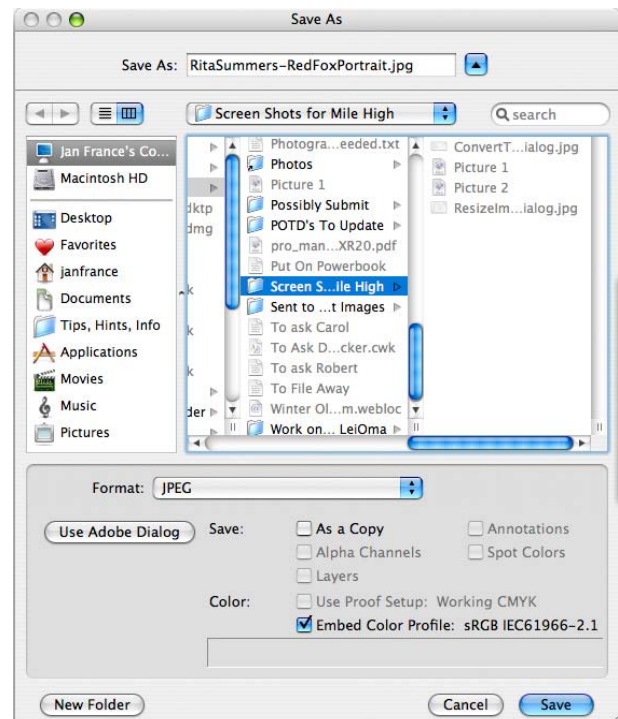
3. Image file size is to be no larger than 350 Kb. The maximum dimensional setting will be 1024 wide by 768 high pixel resolution. Any picture resolution between 72 dpi and 300 dpi is satisfactory provided the image meets the file size criteria of 350 Kb max.

4. To size an image for submission, in Photoshop, go to IMAGE>IMAGE SIZE. The SIZING window will appear. Make sure the bottom two blocks on the left are checked. These blocks are Constrain Proportions and Resample Image. Choose Bicubic as the method of RESAMPLING. At the top of the same window will be two additional blocks that

set the dimensional data in pixels. If your image is horizontal, enter 1024 in the horizontal block. Check to see that the vertical dimension is 768 pixels or less. If your image is a vertical, enter 768 in the vertical block. The horizontal dimension will change proportionately. There is no need to change the DOCUMENT SIZE HEIGHT, WIDTH OR RESOLUTION. Make your image as large as possible dimensionally yet still meet the maximum criteria.



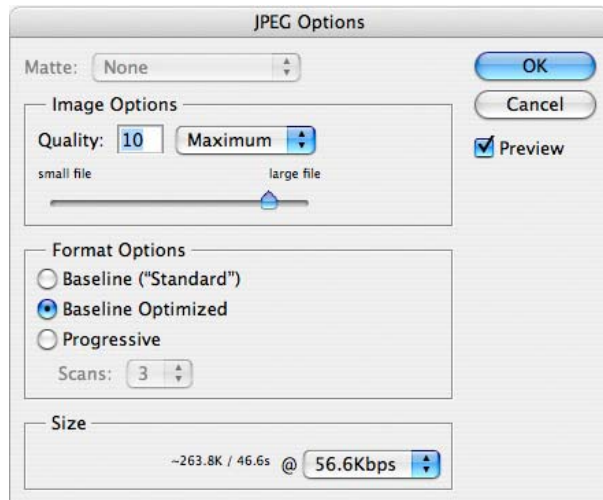
5. Once the image has been resized, go to FILE>SAVE AS. Name your file using this convention: FirstNameLastName-Title. For



example, "RitaSummers-RedFoxPortrait". Set the format to JPEG (not Photoshop or any other format). Make sure the option is checked to



"Embed Color Profile: sRGB IEC61966-2.1". Click on save. Then use the quality slider in the next window to determine how large a file you end up with. Size is shown at the bottom of the window/dialog box. The maximum file size is 350 Kb. If the size of the digital image is larger than this, move the slider to the left to lower the file size.



6. Use the club category you intend to enter as the subject line of your e-mail: i.e. CREATIVE WILDLIFE. Attach your photograph and send to [milehighphotoclub@gmail.com](mailto:milehighphotoclub@gmail.com). Use the body of the e-mail to offer an explanation if needed. Please send only one image per individual e-mail. **Submissions WILL NOT be accepted at the meeting.**

7. Charlie Summers is willing to scan slides for club members (others willing to assist in this regard, please coordinate with Charlie Summers) who might want to try their hand at digital image exhibition. There is no perceived difference when viewing a scanned image or viewing an original digital image. This can be tested in the scanner display prior to saving the file as a digital image.

8. Just as we learned to shoot a proper exposure for our club's film projector, we must do the same with digital slide projection. Our first demonstration session will be a learning experience in how digital images project. It is our experience that once a computer monitor is properly calibrated and used, if the image

displays correctly on your monitor, it will also project well. Every effort will be made to adjust the projector for the proper display of your images. Naturally there will be minor variations between what you remember your image as being versus what we see on the screen. Despite developing a color monitor profile on the laptop being used for projection control, there will also be minor differences between what is presented on the laptop monitor and what is viewed on the screen. This is mainly due to the viewing angle difference between laptop monitor, or monitor angle, and the screen. Members are urged to enjoy the image as presented on the projection screen. These are facts of the new digital world the club is about to enter.

9. Successful digital imaging is dependent on how well you calibrate your home monitor. Therefore every effort should be made to operate in a color-calibrated environment. At a minimum, this involves the use of an adjusted Adobe Gamma in a Windows platform or Apple's Display Calibrator Assistant in a Macintosh operating system. Neither of these two methods replaces the more exacting calibration obtainable with the use of hardware monitor calibrators like the Monaco Optix XR or a Gretag-MacBeth Eye One. There is an excellent review of these calibrators presented at <http://shootsmarter.com/infocenter/wc026a.htm>. Registration is required when visiting this site but the review is free.

10. If there are any questions on these digital guidelines or if assistance is needed, please call Charlie Summers, 303-840-3344. (Anyone else can help in this regard, too-please step up) Charlie will try to walk you through the process over the telephone. We want this transition over to a new environment to go as easily and as smooth as possible.

11. Images will be erased and deleted from the laptop at the end of the competition. Winners can be sent to the Newsletter Editor for publication, if requested, prior to deletion.